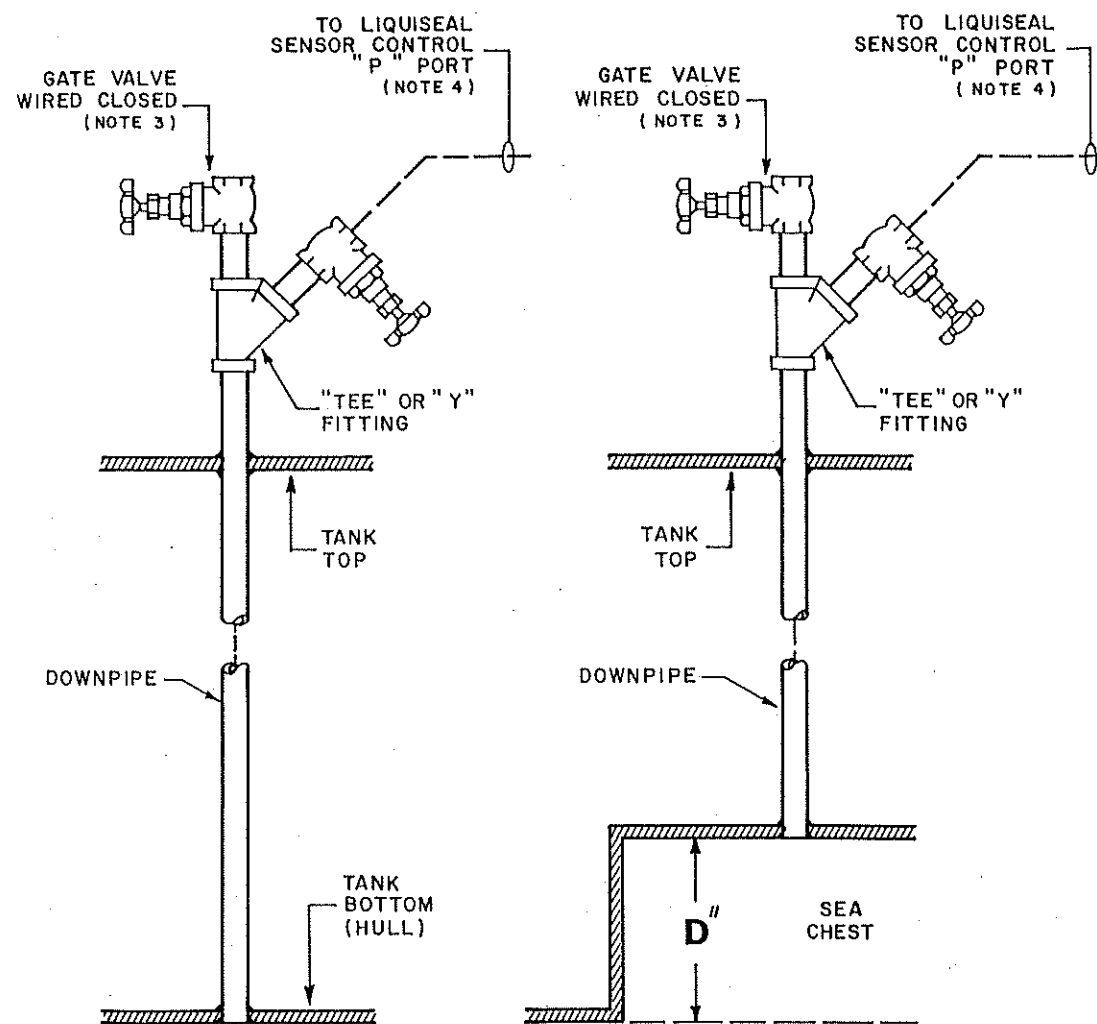
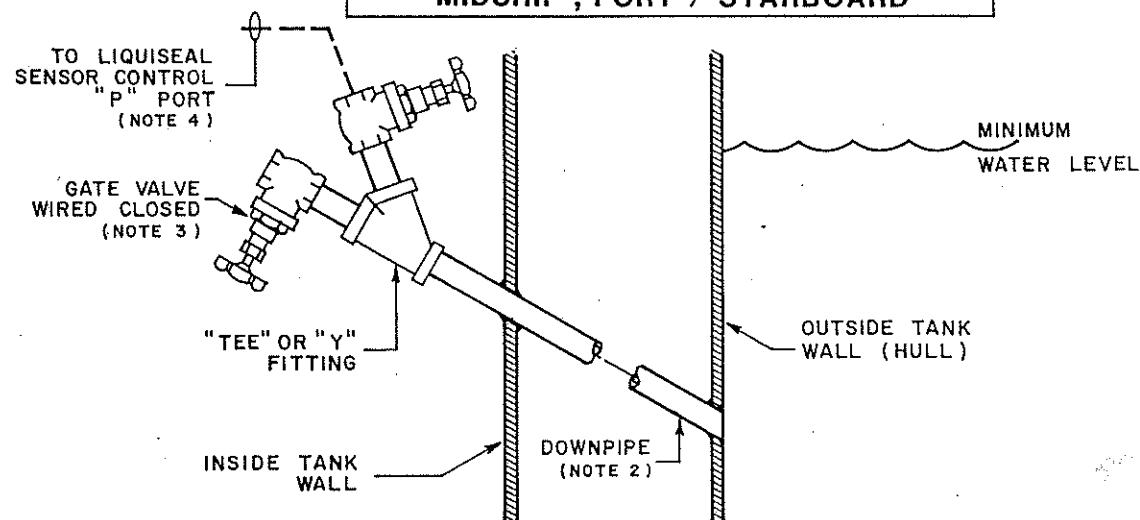


**TYPICAL DRAFT SENSING LOCATION , FORWARD / AFT**



**TYPICAL DRAFT SENSING LOCATION MIDSHIP , PORT / STARBOARD**



**METHODS OF DOWNPIPE INSTALLATION FOR DRAFT MEASUREMENT**


**NOTES**

1. Downpipe items shown on this page are not furnished by K.E.C. are shown as a guide to proper installation only. Selection of items, specifications and installation thereof remains the responsibility of the shipbuilder/installer and shall be in compliance with regulations of the USCG and/or other applicable regulatory bodies.
2. Downpipe and tubing must slope downward toward hull penetration. This will prevent siphoning and ensure positive drainage in the event of loss of compressed air within the system.
3. Gate valve wired closed is intended for "rodding" or "steaming" out accumulations within downpipe. It should be locked or wired closed to ensure that valve remains closed during normal system operation.
4. Gate valve installed in line with LiquiSeal or Purge Control sensor must remain open during normal system operation. It is intended to seal off downpipe in the event of loss of compressed air within the system and/or to permit removing system components.
5. The dimension corresponding to "D" when downpipe terminates in sea chest must be provided to K.E.C. before a calibrated scale can be furnished.

**INSTALLATION INSTRUCTIONS**

**Marine Draft Measurement  
Typical Downpipe Installation**

		DATE	12-8-97
		DRAWN BY	MS Dept
A	12/8/97	Released	APPROVED <i>[Signature]</i>

 Box 1228, Ann Arbor, MI 48106-1228 U.S.A.	DWG. NO.	E-4448-9
	SHEET 1 OF 1	REV. <b>A</b>