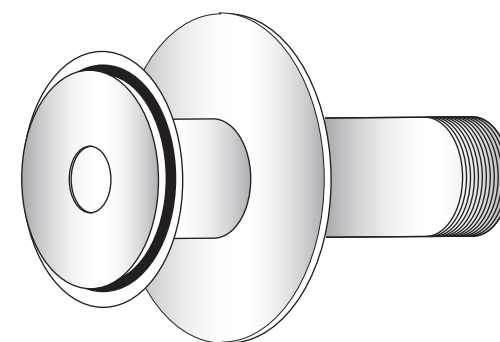
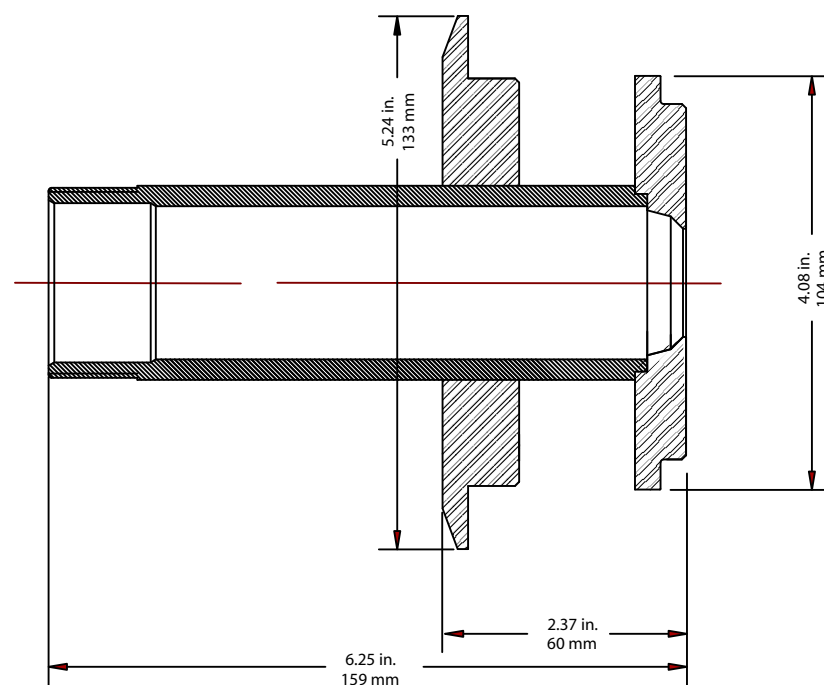


Foxboro 2" Adapter Assembly



Adapter Face with O-ring installed



KING-GAGE 2" Foxboro/Rosemount Adapter Sleeve Part No. 5905-1

Conversion for Foxboro/Rosemount Mounting
KING-GAGE Adaptor Insert

Converts existing FOXBORO flush-weld tank spud for use with KING-GAGE AcraSensor or electronic sensor units.

INSTALLATION

Adapter insert kit includes Buna-N o-ring and stainless steel adaptor. Existing tank spud should be clean and free of any residue prior to installation of adapter assembly.

1. Place o-ring onto end of KING-GAGE adapter. O-ring fits into step on face of adapter.
2. Carefully insert adaptor into existing tank spud. Make certain o-ring remains in position.
3. Use existing clamp assembly (not supplied) to secure adaptor in place. Use clamp adjustment screw to ensure that o-ring seal is tightly compressed.
4. Adapter is now ready to receive KING-GAGE sensor.

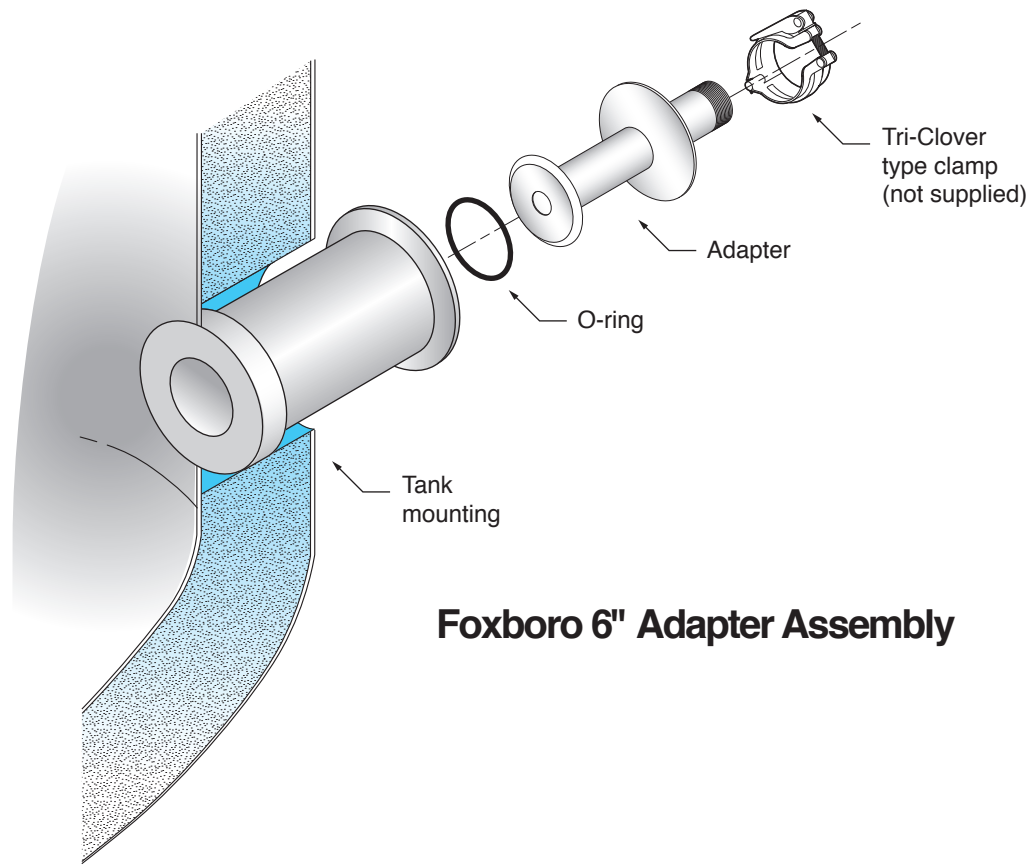
INSTALLATION INSTRUCTIONS

FOXBORO / ROSEMOUNT ADAPTER ASSEMBLY
Converts 2" or 6" Extension Spuds for use with KING-GAGE Sanitary Sensors

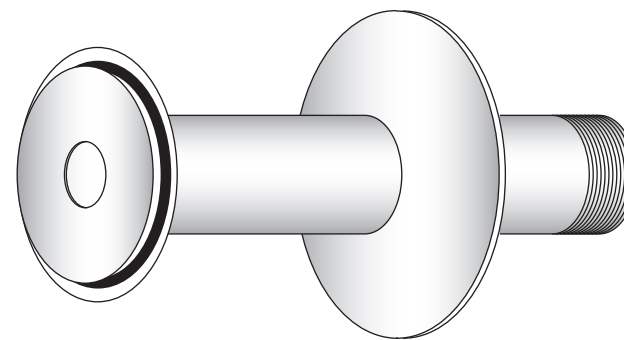
		DATE	7/22/09
		DRAWN BY	D. Kennedy
F	7/09	revised 5905-1	APPROVED jg



DWG. NO.	K-1060-1-1594
SHEET	1 OF 2
REV.	F



Foxboro 6" Adapter Assembly



Adapter Face with O-ring installed

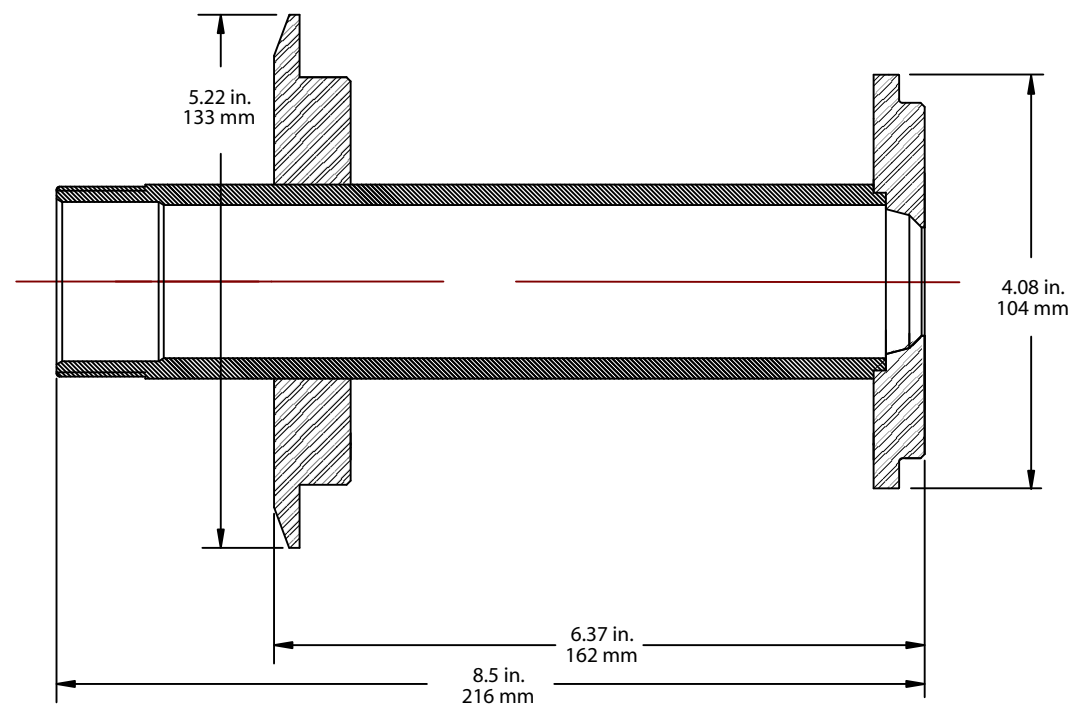
**CONVERSION FOR FOXBORO/ROSEMOUNT MOUNTING
KING-GAGE ADAPTOR INSERT**

Converts existing FOXBORO flush-weld tank spud for use with KING-GAGE AcraSensor or electronic sensor units.

INSTALLATION

Adapter insert kit includes Buna-N o-ring and stainless steel adaptor. Existing tank spud should be clean and free of any residue prior to installation of adapter assembly.

1. Place o-ring onto end of KING-GAGE adapter. O-ring fits into step on face of adapter.
2. Carefully insert adaptor into existing tank spud. Make certain o-ring remains in position.
3. Use clamp assembly (not supplied) to secure adaptor in place. Use clamp adjustment screw to ensure that o-ring seal is tightly compressed.
4. Adapter is now ready to receive KING-GAGE sensor.



**KING-GAGE 6" Foxboro/Rosemount
Adapter Sleeve
Part No. 5905-2**

INSTALLATION INSTRUCTIONS

**FOXBORO / ROSEMOUNT
ADAPTER ASSEMBLY**
Converts 2" or 6" Extension Spuds
for use with KING-GAGE
Sanitary Sensors

		DATE	7/22/09
		DRAWN BY	D. Kennedy
F	7/09	revised 5905-1	APPROVED jg



DWG. NO.	K-1060-1-1594
SHEET	2 OF 2
REV.	F