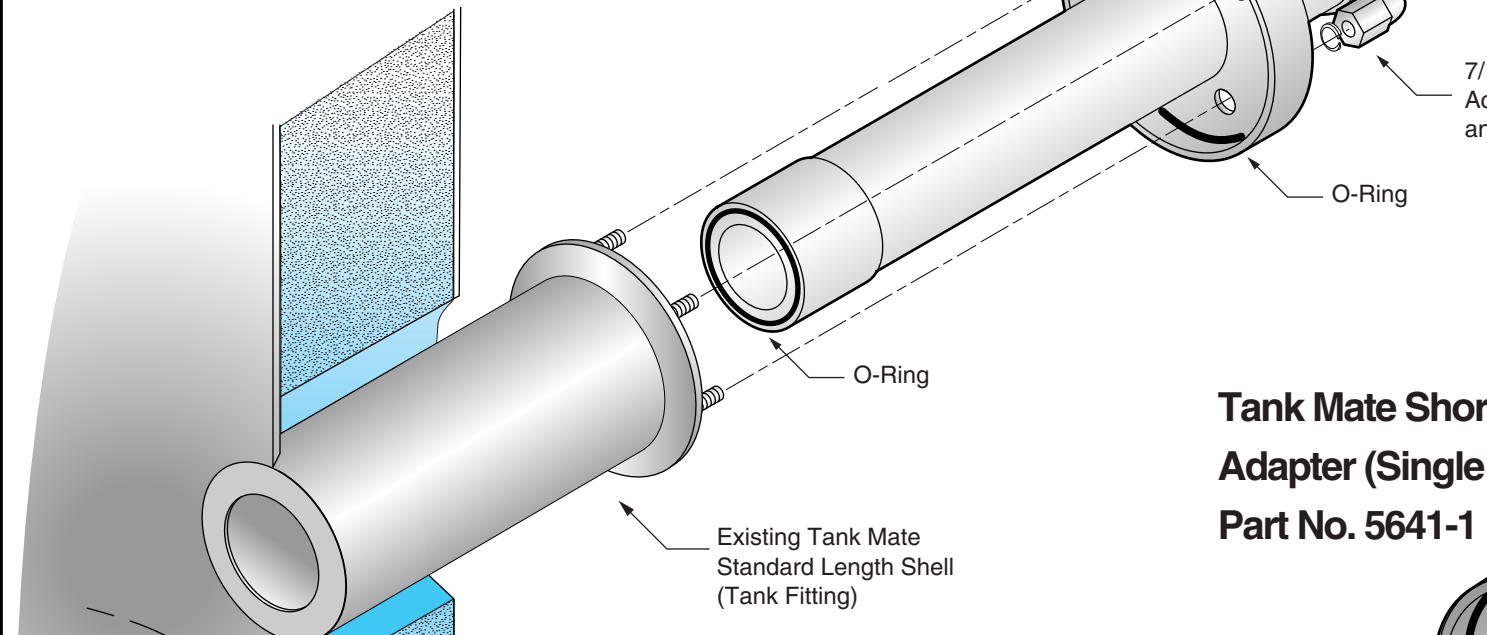
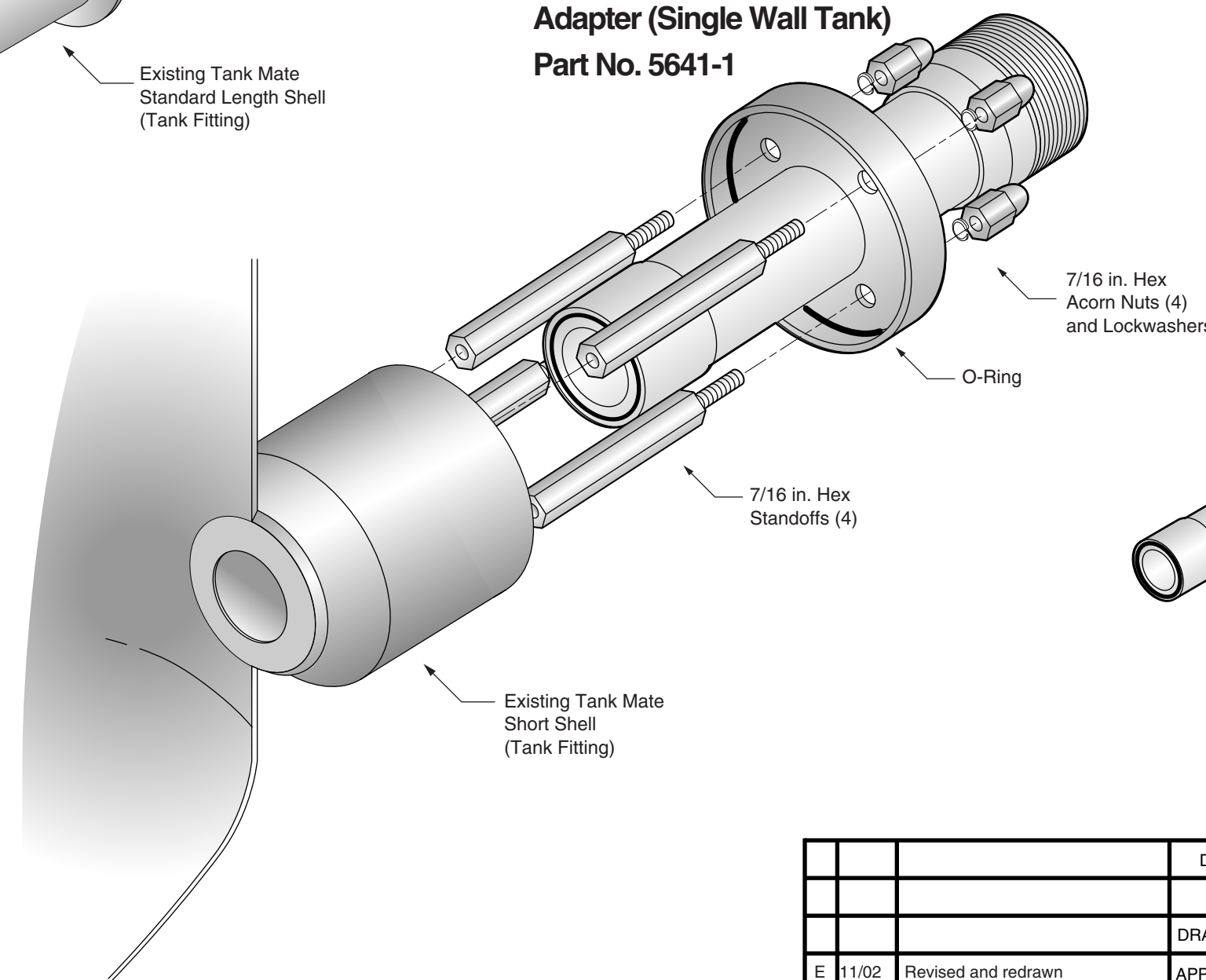


Tank Mate Standard Shell Adapter (Insulated Wall Tank)
Part No. 5641-2



Tank Mate Short Shell Adapter (Single Wall Tank)
Part No. 5641-1



TANK SHELL ADAPTER INSERT

The shell insert(s) illustrated are used to adapt existing tank fittings for KING-GAGE® sensors or transmitters. The shell adapter(s) shown on this instruction sheet permit the following conversion:

- *Tank Mate (original) to KING-GAGE*

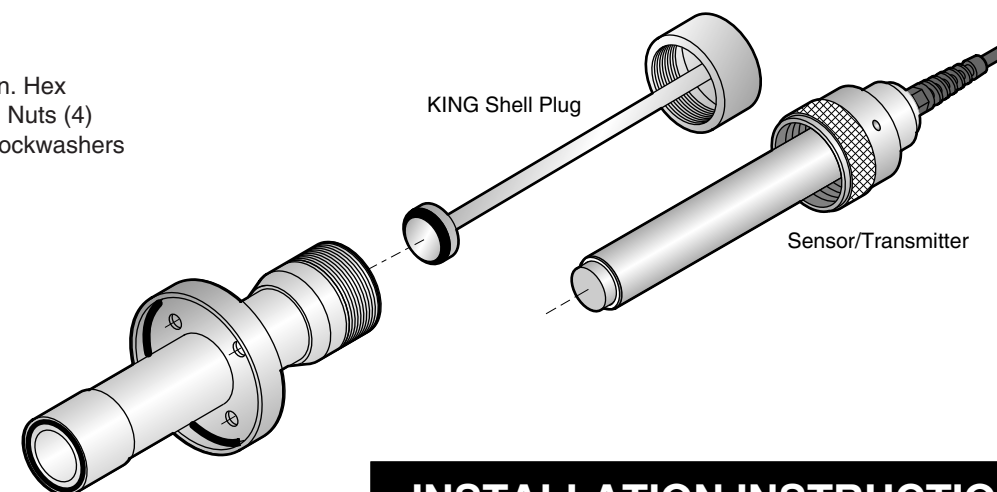
The complete adapter package supplied includes mounting nuts, lockwashers (short adapter includes standoffs) and sealing O-rings.

INSTALLATION

Before inserting adapter assembly, check existing shell that is welded to the tank. If the opening at the end of the shell into the tank is damaged or distorted (oval rather than round), the adapter insert may not properly seal.

1. Remove existing sensor (if applicable) and wipe inside surfaces of the shell so that it is clean and dry.
2. Make certain that O-ring seal is properly seated in the groove on the face of the adapter. Insert adapter into shell and hand tighten acorn nuts.
3. Using a wrench, tighten nuts evenly using a sequence of every other nut to ensure proper seating of O-ring seals.

DO NOT FILL TANK until a sensor or KING shell plug (p.n. 2584-3 "Standard" or p.n. 2584-6 "Long") has been installed.



INSTALLATION INSTRUCTIONS

Adapter Insert for Tank Mate Shell

5641-1 Short Shell Adapter
5641-2 Standard Shell Adapter

			DATE	11/07/2002
			DRAWN BY	J. Gwls
E	11/02	Revised and redrawn	APPROVED	



DWG. NO.	K-1060-1-411
SHEET 1 OF 1	REV. E