

Service Parts & Dimensions – 1050-1.15

Effective: April 2012 (replaces July, 2007)

Model 738 D/P LiquiSeal Control

Part Number Reference:

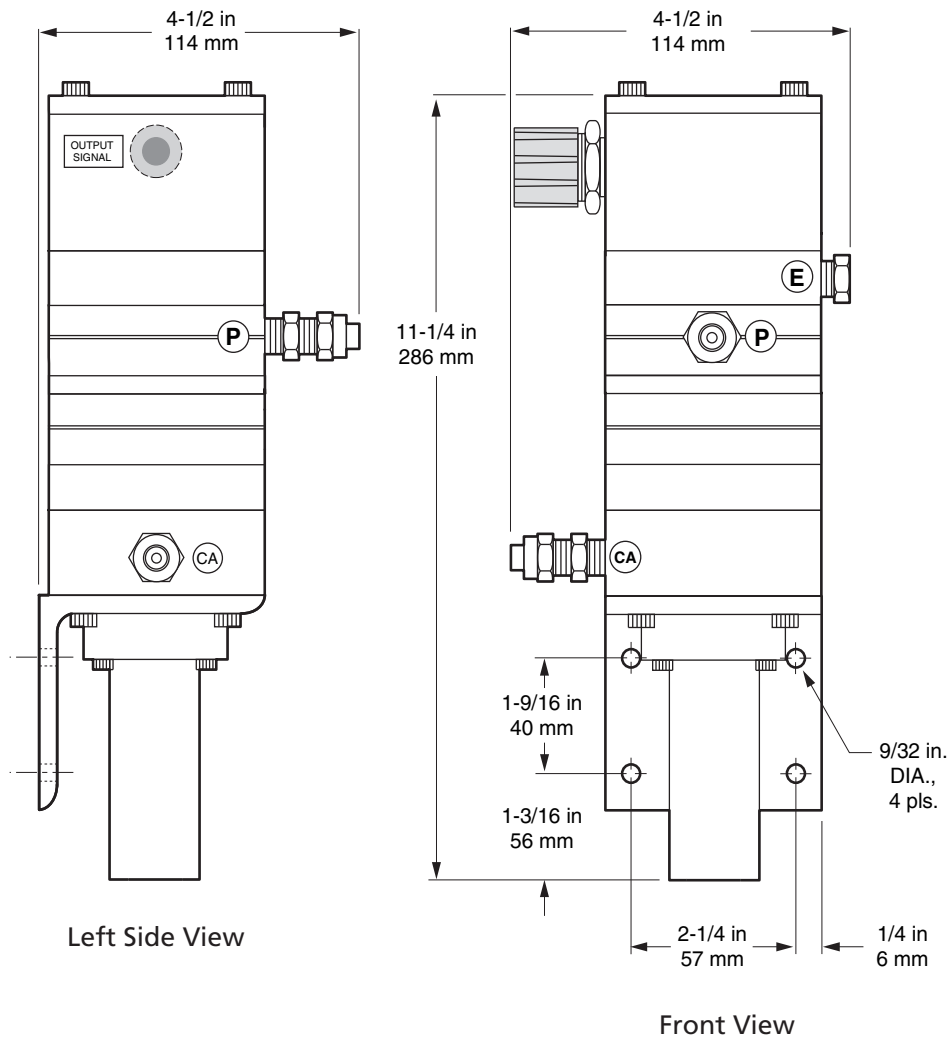
738 - 918 - 1 8

Fittings:
 1 - none
 3 - Polyflo
 4 - Swagelok

D/P Nominal Range:
 0 - 5 psid
 1 - 10 psid
 2 - 15 psid
 3 - 30 psid
 4 - 50 psid

Fitting Reference:

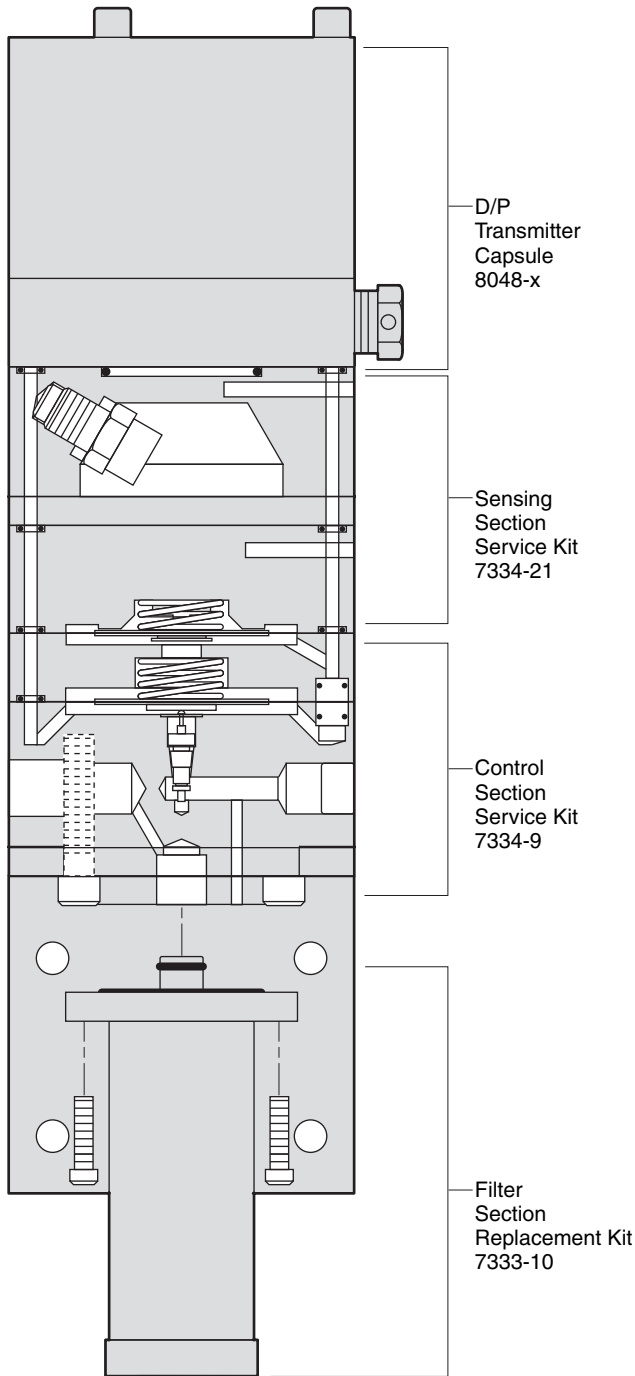
P..... Air Purge
 CA..... Compressed Air
 E..... Equalizer Reference



Since 1937 Marsh Bellofram Group of Companies

8019 Ohio River Blvd. Newell, WV 26050 U.S.A.
 304-387-1200 ■ 800-242-8871 ■ Fax: 304-387-4417

marshbellofram.com ■ king-gage.com



Sensing Section Service Kit 7334-21

Description	Part No.	Qty.
Teflon Gasket.....	6438-3	1
O-Ring (large).....	6495-407	1
O-Ring (small)	6495-559	6
Diaphragm, Titanium	6448-22	1
Orifice Check Valve	7366-1	1

Control Section Service Kit 7334-9

Description	Part No.	Qty.
Replacement Valve Kit.....	3257-1	1
Orifice Assembly.....	4527-2	1
Diaphragm Assembly	4508-6	1
Spring (long).....	6927-7	1
Diaphragm Assembly	4508-7	1
(w/ rubber seat)		
Spring (short).....	6927-6	1
O-Ring.....	6495-559	5

Filter Section Replacement Kit 7333-10

Description	Part No.	Qty.
Filter w/ O-Rings.....	7333-10	1

© King-Gage and the KE emblem are registered trademarks of King Engineering, Newell WV, U.S.A.

All specifications are subject to change without notice

© 2007 ATC King Engineering Division. All rights reserved