

# TrendReader® Standard 2

## Software Specifications

**Type:** Software for SmartReader, SmartReader Plus, IAQ, and OWL Data Loggers

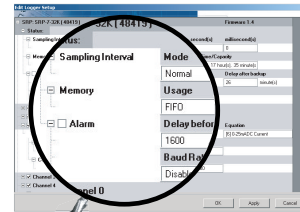
TrendReader® Standard 2 is a powerful, versatile, and easy-to-use software package designed exclusively for ACR's SmartReader Plus, SmartReader, IAQ and OWL data loggers. Powerful features and easy setup enables logged data to be collected and thoroughly analyzed in seconds.

### DOWNLOADING AND COMMUNICATING WITH DATA LOGGER

Set up, download and view information from a single data logger with ACR's IC-102 interface cable (included in software interface package). Connection is simple: plug the interface cable into the USB port of your computer and connect the other end to the logger. No tools, cards or docking stations are required. To communicate from a modem or a network of data loggers, see Networking and Remote Communications sheet.

### SETTING UP DATA LOGGER

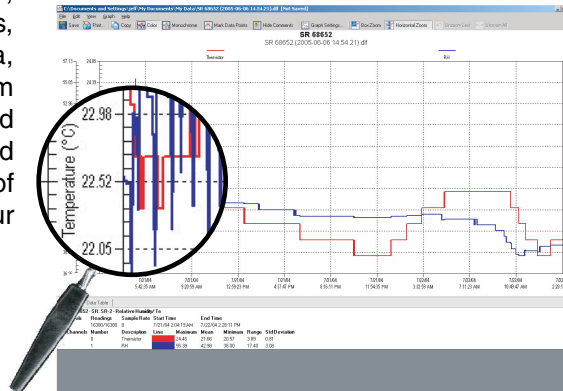
With built-in menus for sample rate and mode, start delay, equations and more, logger setup is fast and easy. In addition, equations are already included for all ACR sensors so you need only select the appropriate equation from the menu or customize your own equation. Real-time readings are displayed in the Setup window, allowing you to verify that your logger is working correctly before placing it in the field.



Logger Setup

### VIEWING DATA

With TrendReader® Standard 2, data can be viewed in table or graphical format. For presentation purposes, view data in graphical format or for a more detailed analysis, view data in table format. Either way, multiple channels of data can be displayed at once. Multiple graphs can be displayed at once and compounded to create new graphs. For added presentation power, add comments, change graph colours, zoom in on specific portions of data, and display your data using custom engineering units. Print or copy and paste graphs into your reports and presentations. Select all or portions of the table and copy and paste into your favorite Windows® program.



### EXPORTING DATA

Use the export function in TrendReader® Standard 2 to export your data to other programs for further analysis. Data can be exported in TXT, BMP, PDF, JPG or CSV formats.



### FEATURES

- Quick and simple communications
- Fast and easy logger setup
- One-touch table views
- Presentation-quality graphs
- Export capabilities

### Model#:

### Cat#:

TRS2 w/IC-101	01-0225
TRS2 w/IC-102	01-0226
TRS2 w/LIC-101	01-0227
TRS2 Full Install	01-0228
TRS2 Upgrade	01-0229

### Minimum Requirements

- a Pentium-166 MHz processor
- Windows 2000 or XP
- 200 MB or hard drive space
- 96 MB of RAM
- a CD-ROM drive
- at least 1 communications port: either serial or USB
- a mouse
- Internet Explorer 5.1

### Recommended Requirements

- a Pentium II -350 MHz processor
- Windows 2000 or XP
- 250 MB or hard drive space
- 128 MB of RAM
- a CD-ROM drive
- at least 1 communications port: either serial or USB
- a mouse
- Internet Explorer 6