



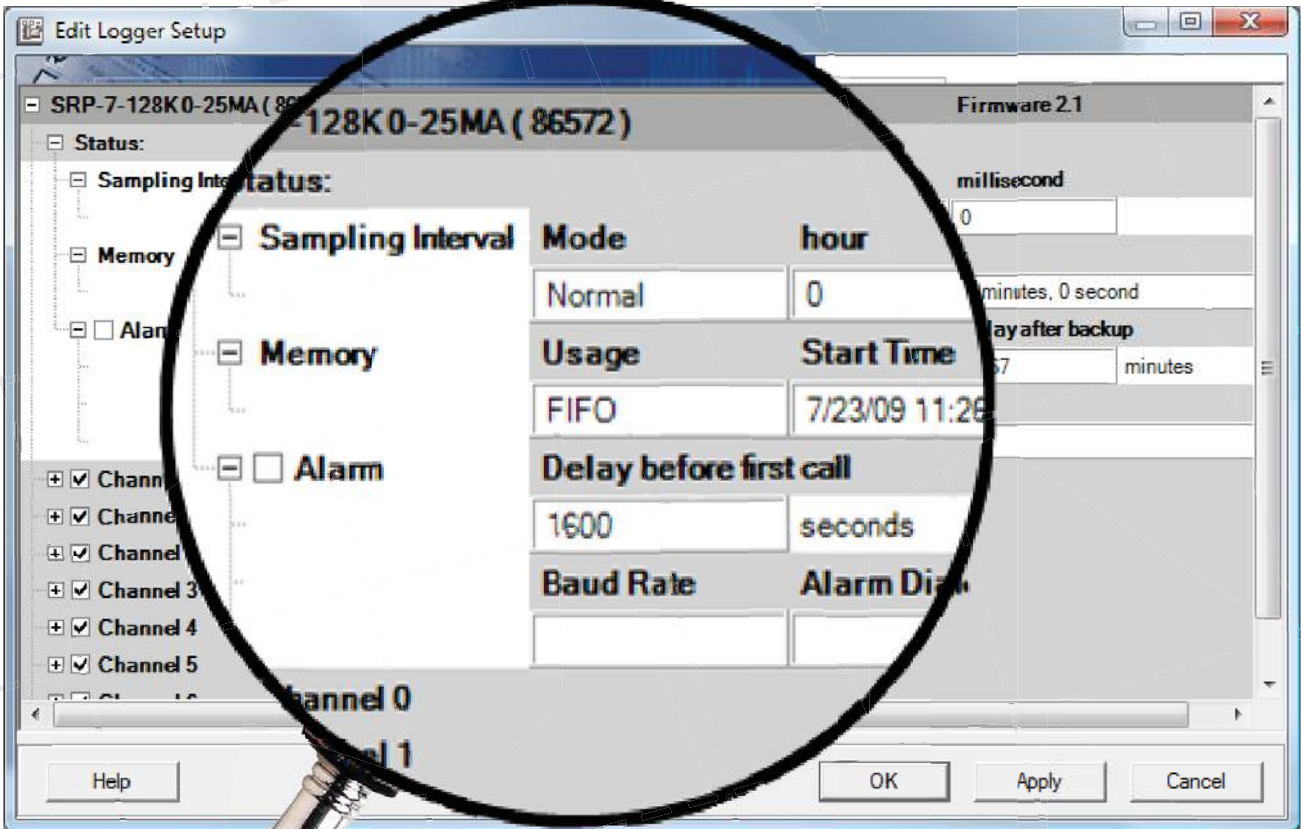
TrendReader 2

Software Specifications

TrendReader® 2 is a powerful, versatile and easy-to-use software application designed exclusively for ACR's SmartReader Plus, SmartReader, IAQ, OWL, TRH, JR and Nautilus data loggers. Powerful features and easy setup enables collected data to be thoroughly analyzed in seconds.

DOWNLOADING AND COMMUNICATING WITH DATA LOGGER

Setup, download and view information from a single data logger with ACR's IC-102 interface cable (included in software interface package). Connection is simple; plug the interface cable into the USB port of your computer and connect the other end to the logger. No tools, cards or docking stations are required.



DATA LOGGER SETUP

With built-in menus for sample rate and mode, start delay, equations and more, logger setup is fast and easy. In addition, equations are already included for all ACR sensors so you need only select the appropriate equation from the menu or customize your own. Real-time readings are displayed in the Setup window, allowing you to verify that your data logger is working correctly before placing it in the field.

FEATURES

- Quick and simple communications
- Fast and easy logger setup
- One-touch table views
- Presentation-quality graphs
- Export capabilities

ORDERING INFORMATION

Item:	Cat#:
TR2 w/IC-102 Interface	01-0226
TR2 w/LIC-102 Interface (OWL)	01-0230
TR2 w/LIC-101 Interface (OWL)	01-0227
TR2 Full Install (Software Only)	01-0228
TR2 Upgrade (Software Only)	01-0229



TrendReader 2

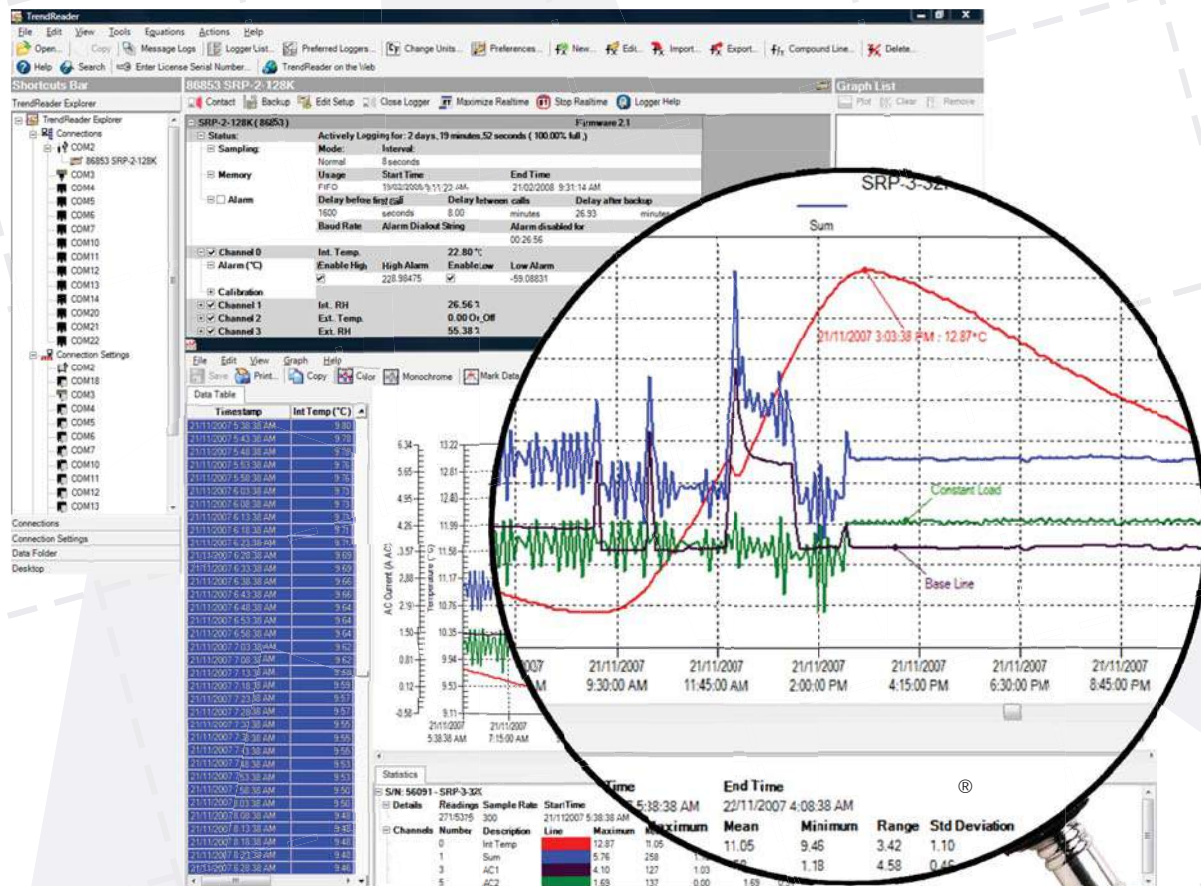
Software Specifications (Continued from Page 1)

VIEWING DATA

With TrendReader[®] 2, data can be viewed in several ways. For presentation purposes, view your collected data in graphical format or for a more detailed analysis, view your data in table format. Either way, multiple channels of data can be displayed at once. Multiple graphs can be displayed together and compounded to create new graphs. For added presentation power, add comments, change graph colors, zoom in on specific portions of data, and display your data using custom engineering units. Print or copy and paste graphs into your reports and presentations. Select all, or portions of the table and copy and paste into your favorite Windows[®] program.

EXPORTING DATA

Use the export function in TrendReader[®] 2 to export your data to other programs for further analysis. Data can be exported in TXT, BMP, PDF, JPG or CSV formats.



SYSTEM REQUIREMENTS

- Pentium II-350MHz or faster Processor
- Compatible with Windows XP, Vista, Windows 7 and Windows 8 (32 bit & 64 bit)
- 250MB of available hard drive space
- 1GB of RAM (2GB recommended)
- At least 1 communications port; either USB or serial depending on interface cable
- Mouse or other pointing device
- Internet Explorer 6 or higher
- Screen resolution of 1024 X 768 or higher for optimal viewing results